

ALCOLite
ROAD SAFETY PRODUCTS

**AVERY
DENNISON**



www.alcolite.co.in

FOR SALES INQUIRIES

Delhi Office : +91-9971044722, 9650056951

Raipur Office : +91-9630020313, 8530306555

Lucknow Office : +91-7219766663, 7219256666

Nagpur Office : +91-8530789888, 7350510111



**Ashu
Enterprises**

ISO 9001-2015 CERTIFIED COMPANY
Manufacturers Of Road & Traffic Safety Products

Registered Office :

Kh. No. 37/23, Ground Floor, Village
Mundka, New Delhi-110041

Corporate Office :

H-14, DSIIDC Industrial Complex,
Udyog Nagar, Rohtak Road, Nangloi,
Delhi 110041

Uttar Pradesh Office :

1/34, Sharda Nagar, Ruchi Khand-II,
Lucknow, Uttar Pradesh-226002

Maharashtra Office

Plot No.103 House No.-1573, Nagrik Gruh Nirman Society, Sonba Nagar, Near
Birla White Godown, Khadgaon Road, Lawa, Nagpur, Maharashtra-440023

Sales Inquiry :

alcoliteindia@yahoo.com
alcolite.roadsafetyproduct@gmail.com

**Road Safety Products
Catalog 2023-24**

" Wider Choice Better Advice "



ALCOLite
ROAD SAFETY PRODUCTS

Making Roads Safe, Seen, Secure.

INDEX

Particulars	Page No.	Particulars	Page No.
Introduction	03	Rubber Parking Safety Products	17
Reflective Sheeting	04	Traffic Cones	18
Retro Grade ACP Sheet	05	Convex Mirror	19
Traffic Signs	06	Median Marker	20
Traffic Signs	07	Flexible Median Marker	20
Plastic Road Studs/RPM	08	Thermoplastic Road Marking Paint	21
Aluminium Road Studs/RPM	09	Safety Barricades	22
Solar Road Products	10	Anti Glare Barricades	23
Solar Road Products	11	Marker Adhesive	24
Solar Road Products	12	Epoxy Adhesive	24
Delineators	13	Que - Manager	25
Spring Post	14	Wheel Clamp Lock	25
ABS Speed Breaker	15	Reflective Safety Jackets	25
Rubber Speed Breaker	16	Other Product	26

INTRODUCTION

Ashu Enterprises, an ISO 9001:2015 Certified Company is engaged in Road and Traffic Safety Products under our brand named "ALCOLite". We are the Leading Manufacturer and Supplier of Road Safety Products, Retro Reflective Sheeting & Road Signage (Sign Boards) which are used by Government and Private Sectors throughout India. Also our Company is Chief Authorized Converter and Distributor of Avery Dennison India Pvt. Ltd. the Indian subsidiary Company of Avery Dennison, USA, which manufactures Retro Reflective Sheeting and Road Safety Products.

Ashu Enterprises is a "One Stop Shop" for Complete range of Road Safety Products known for their Quality, Durability and Effectiveness. Our products are now recognized for Cost-effective and Time-efficient Solutions, which serves the country's ever growing Road and Traffic Safety needs. A Wide assortment of Road Safety Solutions for the Customers as per different attributes provided by them. The entire range has been manufactured using premium grade material with high precision, in order to derive flawless output products for the end-users.

Ashu Enterprises has setup a contemporary infrastructural facility equipped with advanced machinery for carrying out the production procedures effectively. Installed as per required space capacity, and other specifications, these machines aid us in meeting clients' requisites expertly by providing finest range of Road Safety Products. The Company operates out of their Corporate Office and Warehouse in New Delhi and has robust dealer and distributor network in All Over India. With the launch of their new Premium Product Line and optimum positioning the company is looking to have a pan India presence in the near future. We have Three Warehouse and Workshops strategically located in Central and West Delhi for housing of all our production, printing, supplies and display products.

Maintaining flawlessness and superior quality is what we aim for which we constantly focus our endeavour on precision manufacturing and strict inspection of products. Right from procuring the raw material for manufacturing, designing, processing until the final delivery, a robust inspection is carried out in order to derive quality. We have so far effectively served the requisites of customers and gained their appreciation for our finest quality services and excellent products. Even, our R&D experts believing strongly in innovation and commitment to enhance safety of human beings on roads constantly work upon the products for their development and improvement in terms of better safety, protection, durability and finer performance. The Company has aggressive plans to build this business with a wide footprint across all major cities and towns of India.

Ashu Enterprises boasts with Visionary Management, Seasoned Professionals, Disciplined Operating Systems and state of the art Technology, which gives it an edge over other Road Safety Products companies. In less than a decade, the company has become a synonym for High Quality Products delivery within time and costs. As a Corporate philosophy, we believe in alliance and partnerships and encourage them to reach the customers with the Right solution. We envision a highly safe road environment by committing ourselves to help the people drive, walk and get life safer. The company has innumerable clients and dealers All Over India who have been benefitting from the products being offered by the company. Additionally the company has clients belonging to sub-sets which are as follows :-

- N.H.A.I.
- P.W.D
- Development Authority
- Municipal Corporation
- C.P.W.D
- Military Engineering Services (M.E.S)
- Railways Department
- Private Sectors
- Government Contractors

REFLECTIVE SHEETING

Retro- Reflective Sheeting is fabricated using synthetic resin that sturdily resists the damaging effect of changing weather and even imparts high reflectivity, particularly at night. The Reflecting sheet has mainly been designed for using on vehicle licence plates and traffic signs contributing greatly to public safety. The Reflective Sheets are offered by us include.



RETRO GRADE ALUMINIUM COMPOSITE PANEL SHEET

ACP is mainly used for external and internal architectural cladding or partitions, false ceilings, road signages etc. Applications of ACP are not limited to external building cladding, but can also be used in any form of cladding such as partitions, false ceilings, etc. ACP is also widely used within the signage industry as an alternative to heavier, more expensive substrates. These structures made optimal use of ACP through its cost, durability, and efficiency. Its flexibility, low weight, and easy forming and processing allow for innovative design with increased rigidity and durability.



COMMERCIAL GRADE REFLECTIVE SHEETING

Enclosed lens reflective sheeting.

Reflectivity : Exceeds specification ASTM D 4956-04 Type I.

Best for : The materials typically is utilized for short time advertisement / signs, stickers, number plates within areas having low volume, little competing surrounding lights and lower speed traffic.

PREMIUM PRISMATIC GRADE REFLECTIVE SHEETING

Contemporary Microprismatic sheeting.

Reflectivity : Meets specification ASTM D 4956-04 Type VIII.

Best for : Signs that require being visible in any lights or weather conditions. Superior Prismatic Grade gives good performance at short sight distances.



HIGH INTENSITY PRISMATIC GRADE REFLECTIVE SHEETING (HIP)

Exclusive prismatic construction sheeting, backed by reliability.

Reflectivity : Exceeds specification ASTM D 4956-04 Type IV.

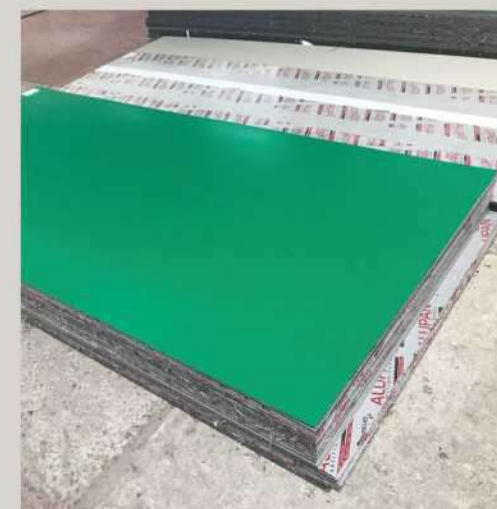
Best for : This type is sheeting is used for permanent and temporary traffic signages, high quality durability, Microprismatic material with pressure sensitive adhesive.

PREMIUM PRISMATIC GRADE REFLECTIVE SHEETING

Contemporary Microprismatic sheeting.

Reflectivity : Meets specification ASTM D 4956-04 Type IX & XI.

Best for : Signs that require being visible in any lights or weather conditions. Superior Prismatic Grade gives good performance at short sight distances.



PRISMATIC ENGINEERING GRADE REFLECTIVE SHEETING (PEG)

Exclusive prismatic sheeting, backed by reliability.

Reflectivity : Exceeds specification ASTM D 4956-04.

Best for : This type is sheeting is used for all traffic situations. Prismatic Engineering Grade is extremely reflective at large angles for the approaching traffic.

OTHER REFLECTIVES AVAILABLE

- Electro Cut Films (ECF)/ Transparent Overlay.
- Night Glow Sheeting
- Aluminium-Backed Flexible Prismatic (AFP)
- Conspicuity Tapes for Trucks & Trailers
- Anti-Graffiti Film

RETRO GRADE ALUMINIUM COMPOSITE PANEL SHEET

Our Global Composite Panel has been flagship company which has been successfully manufacturing Aluminium Composite Panels for RETRO REFLECTIVE ROAD SIGN BOARDS for more than a decade. Alcolite is covered by team of dedicated professional with expertise in respective fields with the state of art manufacturing facility and latest imported machinery. We are well equipped to manufacture international standard Aluminium Composite Panels to meet the rising demand of the ACP Industry.

Retro Grade is being specially developed for reflective signages - self adhesive films applications. Mill finished aluminium chemically washed, top surface chromotized for better adhesion of self adhesive film.

Coil Thickness Available : 0.20, 0.25, 0.40 & 0.50 mm



TRAFFIC SIGNS

Traffic control device is the medium used for communicating between traffic engineer and road users. Unlike other modes of transportation, there is no control on the drivers using the road. Here a traffic control device comes to the help of the traffic engineer. One of the major types of traffic control devices used are TRAFFIC SIGNS. Different types of Traffic Signs are Regulatory signs, Warning signs and Informatory signs. These traffic signs cover all traffic program, safety measures & meet entire specifications world wide. We even manufacture various traffic signs according to the clients need.



TRAFFIC SIGNS

Traffic control device is the medium used for communicating between traffic engineer and road users. Unlike other modes of transportation, there is no control on the drivers using the road. Here a traffic control device comes to the help of the traffic engineer. One of the major types of traffic control devices used are TRAFFIC SIGNS. Different types of Traffic Signs are Regulatory signs, Warning signs and Informatory signs. These traffic signs cover all traffic program, safety measures & meet entire specifications world wide. We even manufacture various traffic signs according to the clients need.



MANDATORY / REGULATORY SIGNS

These signs require the driver to obey the signs for the safety of other road users. These signs are also called mandatory signs because it is mandatory that the drivers must obey these signs. If the driver fails to obey them, the control agency has the right to take legal action against the driver. These signs are primarily meant for the safety of other road users. These signs have generally black legend on a white background. They are circular in shape with red borders.

CAUTIONARY / WARNING SIGNS

These signs are for the safety of oneself who is driving and advice the drivers to obey these signs. Warning signs or Cautionary signs give information to the driver about the impending road condition. They advice the driver to obey the rules. These signs are meant for the own safety of drivers. They call for extra vigilance from the part of drivers. The color convention used for this type of signs is that the legend will be black in color with a white background. The shape used is upward triangular or diamond shape with red borders.

INFORMATORY / GUIDE SIGNS

These signs provide information to the driver about the facilities available ahead, and the route and distance to reach the specific destinations Informative signs also called guide signs, are provided to assist the drivers to reach their desired destinations. These are predominantly meant for the drivers who are unfamiliar to the place. The guide signs are redundant for the users who are accustomed to the location.

OVERHEAD GANTRY AND CANTILEVER SIGN BOARD

Cantilever & Gantry Signs are Traffic Signs Mounted on an Overhead Support. They are usually built on high traffic roads with several routes and lanes. Gantries may also be cantilevered on one side The underlying object of gantry signs is to direct cars driving on highways in the right direction

PROJECT SIGN BORDS

We are experienced in manufacturing Project Sign Boards that are to be installed to any Road Project on behalf of the Contractor on Sites. The main intent behind Project Signage is to ensure that consistent information is being communicated and the sign provide visual consistency.

HAZARD MARKER AND CHEVRON SIGN BOARD

We are trusted for manufacturing Hazard Marker & Chevron Sign Boards which are designed in compliance with IRC-67-2001 and MoRTH & H Specifications. These Signs contain important guidelines for the commuters and are designed with a fine durable finish. Made of Retro Reflective sheeting and ACP Base these signs are long lasting in nature and not affected by adverse climatic condition

Types of Other Traffic Signs

Guide Signs, Toll Road Signs, Lane Signs, General Informative Signs, Service Signs, Emergency Signs.

PLASTIC ROAD STUDS/RPM

We provide a large range of plastic road studs for the clients according to their demands and expectations. The plastics glow road studs or road stud reflectors are extremely durable devices providing day and night visibility in adverse weather conditions. These are reflectorized, i.e., reflect light from vehicle's headlights back to driver's eye. These provide a definitive and clear, outline of pavement markings during poor visibility conditions like fog, rains, and darkness.

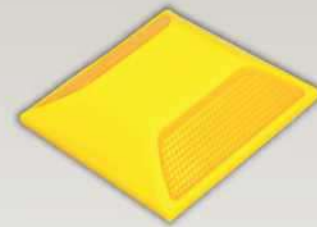


ALUMINIUM ROAD STUDS/RPM

We provide finest and high quality array of Aluminum Road Stud with shank, Aluminum Road Stud with acrylic or glass beads reflector. These are fabricated using high quality components and precisely manufactured for delivering excellent performances. These are reflectorized, i.e., reflect light from vehicle's headlights back to driver's eye.



Product Code : AL-100
Dimension : 100x90x18mm
Direction : Two way acrylic prismatic reflector
Color : Yellow, White, Red



Product Code : AL-101
Dimension : 100x100x20mm
Direction : Two way acrylic prismatic reflector
Color : Yellow, White, Red



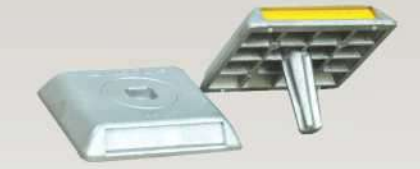
Product Code : Stimsonite C-80
Dimension : 116x81x17mm
Direction : Two way acrylic prismatic reflector
Color : Yellow, White, Red
Meet ASTM-D specification



Product Code : AL-104
Dimension : 100x100x20mm
Direction : Two Way Reflective
Reflector : 21 Glass Beads Each Side
Length Anchoring Shank : 50mm
Material : Aluminum Alloy Body
Color : Yellow, White, Red
Available : With Nail or Shank



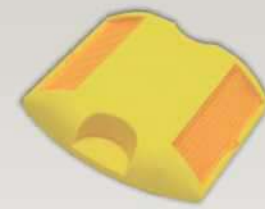
Product Code : AL-105
Dimension : 100x100x20mm
Direction : Two way Reflective
Reflector : PMMA Reflector
Color : Yellow, White, Red
Available : With Nail or Shank



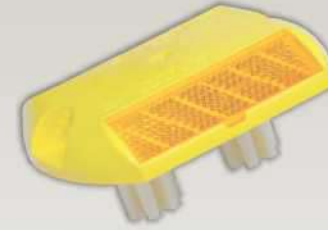
Product Code : AL-106
Dimension : 100x100x20mm
Direction : Two way Reflective
Reflector : Retro Reflective Prismatic Sheeting
Color : Yellow, White, Red
Available : With Nail or Shank



Product Code : 3M Road Stud
Dimension : 100x90x16mm
Direction : Two way acrylic prismatic reflector
Color : Yellow, White, Red
Meet ASTM-D specification



Product Code : AL-280
Dimension : 100x90x18mm
Direction : Two way acrylic prismatic reflector
Color : Yellow, White, Red
Meet ASTM-D specification



Product Code : AL-280 TMDS
Dimension : 100x90x18mm
Direction : Two way acrylic prismatic reflector
Color : Yellow, White, Red
Meet ASTM-D specification



Product Code : AL-107
Dimension : 100x100x20mm
Direction : Two way Reflective
Reflector : 43 Glass Beads Each Side
Color : Yellow, White, Red
Available : With Nail or Shank



Product Code : AL-108
Dimension : 100x100x20mm
Direction : Two way Reflective
Reflector : Prismatic Lense Reflector
Color : Yellow, White, Red
Available : With Inbuilt Shank



Product Code : AL-112
Dimension : 100x100x20mm
Direction : Two way Reflective
Reflector : PMMA Reflector
Color : Yellow, White, Red
Available : With Nail or Shank

*** Above product compatible with Alcolite Epoxy Adhesive.

*** Above product compatible with Alcolite Epoxy Adhesive.

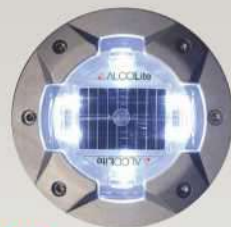
SOLAR ROAD PRODUCTS

We provide Reliable and Premium Quality Solar Road Safety Products used for Road Safety. Solar Road Products consisting Heavy Duty Solar Panels, Technical Circuit, Operating Systems and Battery for Storage of Solar energy in device. Our Product range includes Solar road Stud, Solar Delineator, Solar Flashing warning Light, Solar Traffic Blinkers, Portable Solar Sign Boards Etc.



SOLAR ROAD PRODUCTS

We provide Reliable and Premium Quality Solar Road Safety Products used for Road Safety. Solar Road Products consisting Heavy Duty Solar Panels, Technical Circuit, Operating Systems and Battery for Storage of Solar energy in device. Our Product range includes Solar road Stud, Solar Delineator, Solar Flashing warning Light, Solar Traffic Blinkers, Portable Solar Sign Boards Etc.



Solar Road Stud

Product Code : AL-200
Dimension : 138mm OD X 38.5 mm
Direction : 360 Degree Illumination
LED : 8 Nos
Body : Aluminium + Polycarbonate
Visibility : > 800 Meters
Water Resistance : IP 65/ IP 68
Warranty : 1 Year



Solar Road Stud

Product Code: AL-201-A
Dimension : 132 X 122 X 72 mm
Direction : Two Way Reflective
LED : 3 No. Each Side
Color : Amber & Red
Visibility : > 800 Meters
Shank : Available
Warranty : 1 Year



Solar Road Stud

Product Code: AL-201-B
Dimension : 132 X 122 X 72 mm
Direction : Two Way Reflective
LED : 3 No. Each Side
Color : Amber & Red
Shank : Available



Solar Warning Light

Product Code : AL-204
Height : 15.5 cm
Dia : 9 cm
Function : Flash Close ABS Base
Led : 4 Bright Led Fitted
Battery : Inbuilt
Warranty : 1 Year



Solar Flasher

Product Code: AL-205
Height : 22 cm
Dia : 18 cm
Function : Flash Close ABS Base
Led : 6 Bright Led Fitted
Battery : Inbuilt



Solar Mobile Traffic Light

Product Code : AL-206
Size : 300 mm
 (Powder Coated)
Body Material : Crc Sheet Of 1mm
 Metal Platform
Light Matrial : Polycarbonate
Led : 61 Bright Led
 Encapsulated
 In Convex Lense
Battery : 12 Volts 65 AH,
 Maintenance Free



Solar Delineator

Product Code : AL-202
Light Dimension : 70 X 70 X 100 mm
Pipe Dimension : 48 X 1000 mm
Direction : 360 Degrees Round
Light : Protection With Top Ms
 Mesh Fitted
Viewing Distance: 500 Meters
Warranty : 1 Year



Solar Warning Light

Product Code: AL-203-A
Height : 15.5 cm
Dia : 9 cm
Function : Flash Close ABS Base
Led : 4 Pcs Led Fitted
Battery : Inbuilt



Solar Warning Light With MS Mesh Cover

Product Code: AL-203-B
Height : 15.5 cm
Dia : 9 cm
Function : Flash Close ABS Base
Led : 4 Pcs Led Fitted
Battery : Inbuilt



Solar Blinker Traffic Light

Product Code : AL-SB-200P
 (Polycarbonate)
Size : 200 mm
Body Material : Polycarbonate Body
Solar Panel : 20 Watts Panel With Microcontrolled
 Solar Charger
Led : 22 Bright Led Encapsulated In
 Convex Lense
Battery : 4.5 Ah, Maintenance Free
Warranty : 1 Year



Solar Blinker Traffic Light

Product Code : AL-SB-300P
 (Polycarbonate)
Size : 300 mm
Body Material : Polycarbonate Body
Solar Panel : 40 Watts Panel With Micro
 Controlled Solar Charger
Led : 172 Bright Led
Battery : 26 AH, Maintenance Free
Warranty : 1 Year



Solar Blinker Traffic Light

Product Code : AL-SB-300M
 (Metal)
Size : 300 mm
Body Material : Metal Body
Solar Panel : 20 Watts Panel With Micro
 Controlled Solar Charger
Led : 172 Bright Led
Battery : 7 AH, Maintenance Free
Warranty : 1 Year

SOLAR ROAD PRODUCTS

We provide Reliable and Premium Quality Solar Road Safety Products used for Road Safety. Solar Road Products consisting Heavy Duty Solar Panels, Technical Circuit, Operating Systems and Battery for Storage of Solar energy in device. Our Product range includes Solar road Stud, Solar Delineator, Solar Flashing warning Light, Solar Traffic Blinkers, Portable Solar Sign Boards Etc.



DELINEATORS

Delineators are ideally suitable for dangerous central verges, islands, sharp curves etc, High quality reflectors fixed on both sides make it highly visible in poor light condition. They can be installed horizontally as well as vertically. Due to specially designed body and reflectors fixation method, their reflectivity and durability remain for a longer life.



Solar Blinker Traffic Light

Product Code : AL-SB-400P
(Polycarbonate)
Size : 400 Mm
Body Material : Polycarbonate Body
Solar Panel : 20 Watts Panel With Micro Controlled Solar Charger
Led : 216 Bright Led
Battery : 12 AH, Maintenance Free
Warranty : 1 Year
Also Available In Metal Body And 400 Mm Dia



Solar Sign Board

Product Code : AL-SB-500
Dimension : 450mm X 600mm X 52mm.
Direction : Moving & Blinking
Solar Panel : 5 Watts Panel With Micro Controlled Solar Charger
Led : 35 Bright Led Encapsulated In Convex Lense
Battery : Lion 6, 4.5 Ah Battery
Warranty : 1 Year



Solar Sign Board

Product Code : AL-SB-501
Dimension : 600mm X 900mm X 52mm.
Direction : Moving & Blinking
Solar Panel : 5 Watts Panel With Micro Controlled Solar Charger
Led : 117 Bright Led Encapsulated In Convex Lense
Battery : Lion 6, 4.5 Ah Battery
Warranty : 1 Year



Reflective Rigid Delineator

Product Code : AL-RD-T04 & T11
Height : 1200 mm
Width : 110 mm X 34 mm
Reflective Area : 300 Sq.Cms



Reflector Delineators

Product Code : AL-301 (A) & AL-301 (B)
Direction : Two way Acrylic Prismatic Reflector
Color : Red, White or Yellow combination.
Height : 750mm, 1000mm & 1200 mm



Reflector Delineators

Product Code : AL-302
Size of reflective strip : 3 or 4 HIP reflective 50mm strips rounded in different color
Net/ Zali Outer Dia : 200mm
Height : 750mm, 1000mm & 1200 mm



Solar Sign Board

Product Code : AL-SB-502
Dimension : 600mm X 600mm X 52mm.
Direction : Moving & Blinking
Solar Panel : 5 Watts Panel With Micro Controlled Solar Charger
Led : 9 Bright Led Encapsulated In Convex Lense
Battery : Lion 6, 4.5 Ah Battery
Warranty : 1 Year



Solar Sign Board

Product Code : AL-SB-503
Dimension : 900 Mm Triangle
Direction : Moving & Blinking
Solar Panel : 5 Watts Panel With Micro Controlled Solar Charger
Led : 130 Bright Led
Battery : Lion 6, 4.5 Ah Battery
Warranty : 1 Year



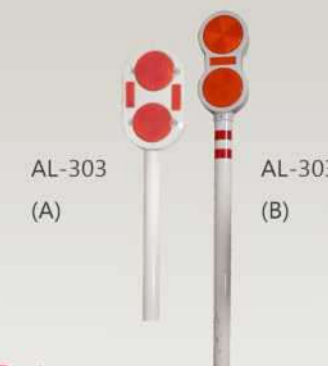
Solar Sign Board

Product Code : AL-SB-504
Dimension : 600 Mm Circular
Direction : Moving & Blinking
Solar Panel : 5 Watts Panel With Micro Controlled Solar Charger
Led : 130 Bright Led
Battery : Lion 6, 4.5 Ah Battery
Warranty : 1 Year



Alcolite Guide Post

Product Code : AL-303 (A) & AL-303 (B)
Direction : Two way Reflector Metal Body
Color : Orange and White combination
Height : 750mm, 1000mm & 1200 mm



Metal Delineator (IRC-79)

Product Code : AL-304
Dimension : 100 mm X 25 mm X 1200 mm (Height)
Reflective Tape : HIP Grade-80mm X 120 mm or 80 Circle, Both Side
Width : 150 mm X 100 mm X 3 nos Both Side
Color : Black Powder Coating



Metal Delineator (IRC-2019)

Product Code : AL-305
Dimension : 1000mm
Reflective Tape : 80mm X 150 mm X 6Nos, T-11 Sheeting Both Side
Width : 150 mm X 100 mm
Color : Black Powder Coating



SPRING POST

We impart excellent assortment of Spring Posts for clients according to their desired specification. Operating as spring post manufacturer and supplier, We have a large variety available with us, offered at competitive rates.



PLASTIC SPEED BREAKER

Mode of study plastic, speed breakers are highly resistant to severe impacts and harsh weather conditions. Its dovetail interlocking subunits make it bind perfectly into a one firm bump. The pre colored materials (Black /Yellow) and UV stabilizers keep them perpetually colorful. Studded with reflectors on either side, they are clearly visible to the motorists during nights hours. These breakers are ideal for private colonies, hospitals, schools, collages, universities, security check post ,parking areas, loading sites, etc. In cities. Easily removable, this breaker can easily be relocated as desired.

Uses : Road, Tunnels, Parking Lots, Parking Garages, Inside and Outside Industrial Sites & Street with High Traffic Flow.



Product Code : AL-801
Height : 780 mm
Upper Dia : 80 mm
Body Materials : Strong Flexible UV Protected PU
Hardness : 85(-/+ 5)
Reflective Band : High Intensity Reflective Light Material crystal Lattice
Weathering Resistance : 3 years



Product Code : AL-802
Height : 750 mm
Upper Dia : 80 mm
Body Materials : Strong Flexible UV Protected PU & PVC
Hardness : 85(-/+ 5)
Reflective Band : High Intensity Reflective Light Material crystal Lattice



Product Code : AL-803
Height : 750 mm
Upper Dia : 80 mm
Body Materials : Strong Flexible UV Protected PU
Hardness : 85(-/+ 5)
Reflective Band : High Intensity Reflective Light Material Crystal Lattice



Product Code : AL-804
Height : 710 mm
Upper Dia : 80 mm
Body Materials : Strong Flexible UV Protected PU
Hardness : 85(-/+ 5)
Reflective Band : High Intensity Reflective Light Material crystal Lattice
Weathering Resistance : 3 years



Centre Verge Product Code : AL-805
Dimensions : Length 750 mm & Width 250 mm
Weight : 2.25 kgs
Body Materials : Molded in ABS - PC Alloy, UV Stabilized
Color : Yellow & Black



Product Code : AL-806
Height : 1000 mm
Upper Dia : 80 mm
Body Materials : Strong Flexible UV Protected PU
Hardness : 85(-/+ 5)
Reflective Band : High Intensity Reflective Light Material crystal Lattice
Weathering Resistance : 3 years



Body Material: Acrylonitrile Butadiene Styrene or ABS Plastic

AL-1005 250mm (L) X 350mm (W) X 50mm (H)	AL-1008 500mm (L) X 380mm (W) X 75mm (H)	Color: Yellow / Black
AL-1006 500mm (L) X 380mm (W) X 50mm (H)	AL-1009 500mm (L) X 130mm (W) X 25mm (H)	
AL-1007 250mm (L) X 750mm (W) X 75mm (H)	AL-1010 275mm (L) X 150mm (W) X 30mm (H)	



*** Above product compatible with Alcolite Epoxy Adhesive.

RUBBER SPEED BREAKER

Long lasting and cost efficient Rubber Product maximum visibility, even at night, thanks to its flexible rubber material resistant to extreme temperature variations, UV light, oil and moisture easy maintenance, not rusts, not chips, not cracks, not crumbles, not corrodes, not needs repainting it can be fixed using glue, adhesive tape or screws it can be secured into concrete, steel or other material. one piece construction

Uses : Road, Tunnels, Parking Lots, Parking Garages, Inside and Outside Industrial Sites & Street with High Traffic Flow.



RUBBER PARKING SAFETY PRODUCTS

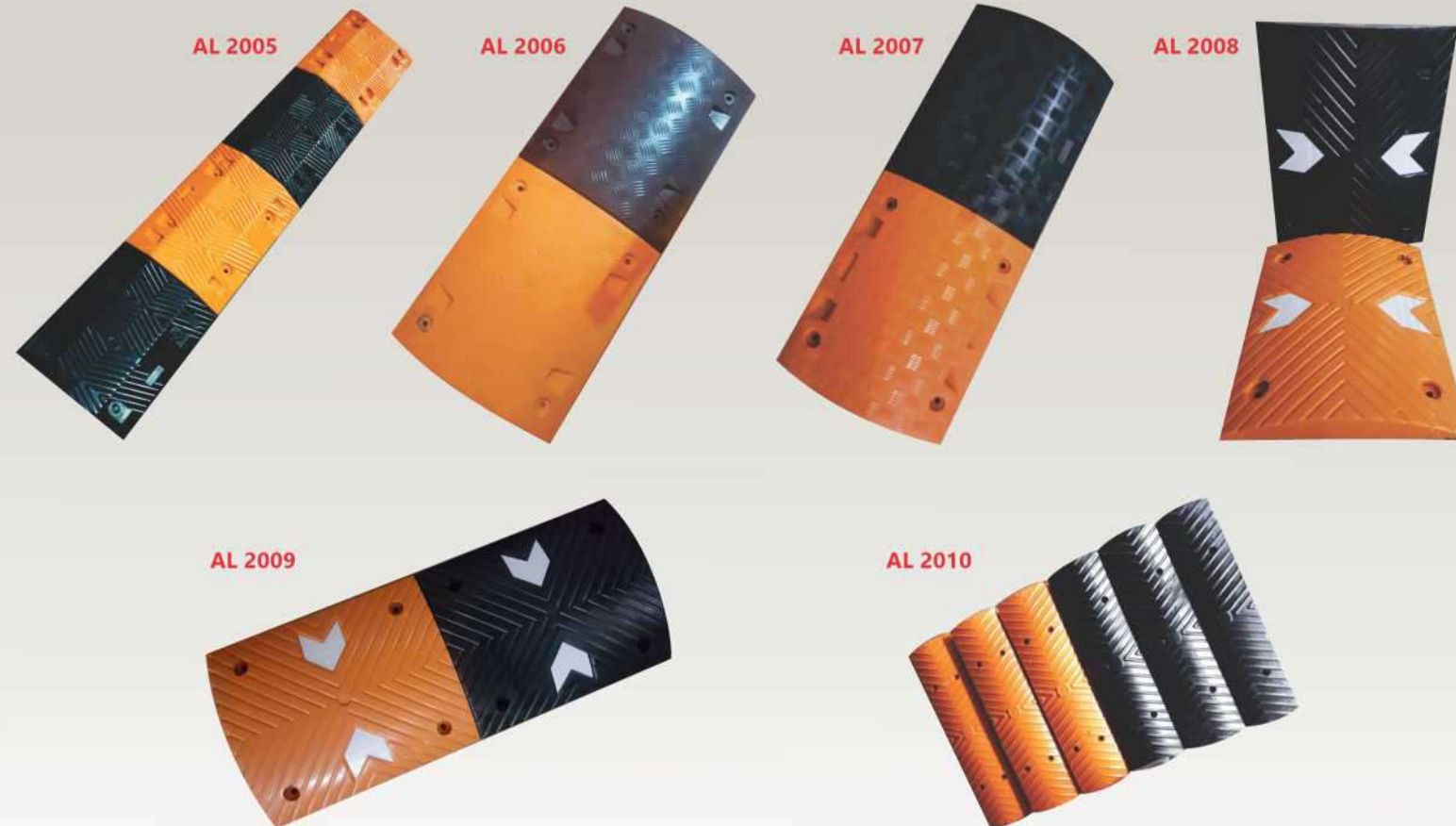
We also offer Long Lasting & Cost efficient Rubber Parking Safety Product, These products are ideally suited for use in areas like car parks, Warehouses and other applications. Some of its features include safeguard vehicles from possibility of dents and scraping, Feature highly visible yellow reflective stripes that support Highlighting the areas, superior grade rubber material finish for reliable usage easy to install through support of bolts and screws.



Body Material:
EPMD Rubber
Color : Yellow / Black

AL-2005 500mm (L) X350mm (W) X50mm (H)
AL-2006 500mm (L) X415mm (W) X50mm (H)
AL-2007 500mm (L) X415mm (W) X75mm (H)

AL-2008 500mm (L) X400mm (W) X50mm (H) (ARROW MODEL)
AL-2009 500mm (L) X415mm (W) X75mm (H) (ARROW MODEL)
AL-2010 500mm (L) X130mm (W) X25mm (H)



**Corner Guard
(L Shape & Round Shape)**
Product Code : AL-3005
Dimension : 800, 900, 1000 & 1200 MM
Body Material : Rubber
Reflectors : High Quality Retro Reflective



Wheel Stopper
Product Code : AL-3006
Dimension : 500 X 160 X 152 MM & 600 X 120 X 100 MM
Body Material : Rubber
Reflectors : High Quality Retro Reflective



Dock Bumper
Product Code : AL-3007
Dimension : 450 X 240 X 100 MM
Body Material : Rubber
Reflectors : High Quality Retro Reflective



Wheel Chock
Product Code : AL-3008
Dimension : 275 X 225 X 250 Mm & 375 X 200 X 225 MM
Body Material : Rubber
Reflectors : High Quality Retro Reflective

ALCOLITE TRAFFIC CONES

Heavy Duty UV Stabilized Non-Fading Colored Good Quality Traffic Cones
ALCOLITE manufactures a wide range of heavy duty traffic cones which are made from strong durable plastic making them excellent for external use in all conditions. They're also stackable for easy storage when not in use.



CONVEX MIRROR

Convex mirrors are ideal for any area where an unobstructed view is required. The mirror faces are manufactured from shatterproof acrylic and come with heavy duty fittings and will provide years of maintenance free service. Convex Mirror, fish eye mirror in which the reflective surface bulges toward the light source and it's reflecting light outwards.



Product Code : AL- 601
Height : 750 mm
Weight : 1.2 Kgs
Base : 385X385 mm
Material : LDPE
Reflective Tape Size : 100 mm



Product Code : AL- 602
Height : 750 mm
Weight : 1.5 Kgs
Base : 385X385 mm
Material : HDPE
Reflective Tape Size : 100 mm



Product Code : AL- 603
Height : 750 mm
Weight : 2.5 Kgs
Base : 400X400 mm
Material : HDPE
Reflective Tape Size : 150 mm



Product Code : AL-701
Diameter : 450mm/18 Inch
Body Material : Polycarbonate
Weight : 2160 Gms.
Packing Size : 18X20 Inch
Fixing Measures : Clamp & Bolts



Product Code : AL-702
Diameter : 600mm/24 Inch
Body Material : Polycarbonate
Weight : 2600 Gms.
Packing Size : 24X24 Inch
Fixing Measures : Clamp & Bolts



Product Code : AL- 604
Height : 750 mm
Weight : 3.5 Kgs
Base : 400X400 mm
Material : HDPE
Reflective Tape Size : 150 mm



Product Code : AL- 605
Height : 1000 mm
Weight : 4.5 Kgs
Base : 500X500 mm
Material : HDPE
Reflective Tape Size : 150 mm



Product Code : AL- 606
Height : 750 mm
Weight : 4 Kgs
Base : 385X385 mm
Material : HDPE
Reflective Tape Size : 100 mm



Product Code : AL-703
Diameter : 800mm/32 Inch
Body Material : Polycarbonate
Weight : 5080 Gms.
Packing Size : 33X33 Inch
Fixing Measures : Clamp & Bolts



Product Code : AL-704
Diameter : 1000mm/39 Inch
Body Material : Polycarbonate
Weight : 6920 Gms.
Packing Size : 39X39 Inch
Fixing Measures : Clamp & Bolts

ALCOLITE MEDIAN MARKER

Made of Tough, Impact Resistant Injection Moulded Thermoplastic Body.



ALCOLITE FLEXIBLE MEDIAN MARKER

High Visibility of Medians & Curves on Roads.



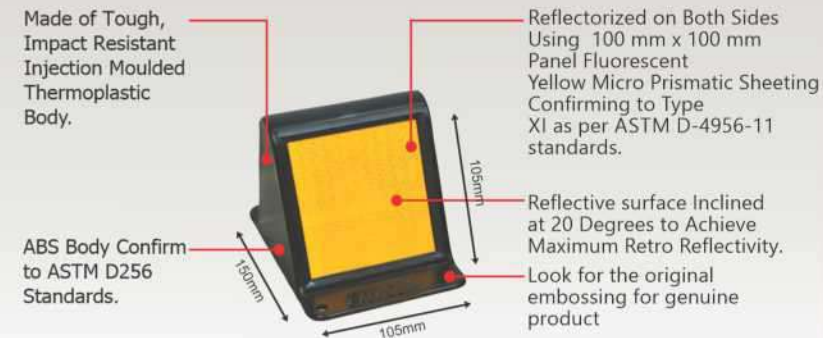
ALCOLITE THERMOPLASTIC ROAD MARKING PAINT

We manufacture thermoplastic road marking material to comply with the following standards or as required by our customers. Hotmelt Thermoplastic Road Marking Material contains hydrocarbon resin, polymer, mineral oil, titanium dioxide, limestone extender, glass beads, and limestone aggregates in accordance with Indian & International Standards.



Alcolite Median Marker

Made of tough, impact-resistant thermoplastic body, reflectorized on either side using fluorescent yellow prismatic sheeting, Alcolite Median Marker is a highly durable reflective product for medians. Designed to take the rigors of natural weathering, the product makes the medians extremely visible thereby preventing accidents and saving invaluable lives on roads.



Alcolite Flexible Median Marker

Ensure high visibility of medians / pavements in the night or rainy conditions Flexible body which allows impact resistance bouncing back to original axis position. Tough, impact-resistant bodies with Fluorescent Prismatic Sheeting ensuring long-lasting performance.



Coefficient of Retroreflection - XI Fluorescent Yellow Sheeting

Observation Angle°	0.2		0.5		1	
Entrance Angle°	-4	30	-4	30	-4	30
Coefficient of retroreflection	593.2	240.5	457.8	172.6	130.5	59.5



Alcolite Thermoplastic Road Marking Paint

Product Code : AL-4000

The hot-applied compound is specially formulated with superior quality imported raw material. This is a synthetic resin-based thermosetting material which is having better features comparing to conventional applied cold applied paints. The thermoplastic material consists of 100% solids and it is environment-friendly as it is solvent-free. Hotmelt Thermoplastic Road Marking Material is generally regarded as superior and more cost-effective than other paints marking as it has better durability, reflectivity, visibility and provides less traffic disruption during applications.

We manufacture thermoplastic road marking material to comply with the following standards or as required by our customers.

- MORTH
- BS 3262: Part 1 : 1989
- BS EN 1871
- JIS K 5655

Scope of Applications : Hotmelt Thermoplastic Road Marking Material can be applied over both Bituminous and Cement Concrete Surface.

Technical Data Sheets and MSDS available on request.



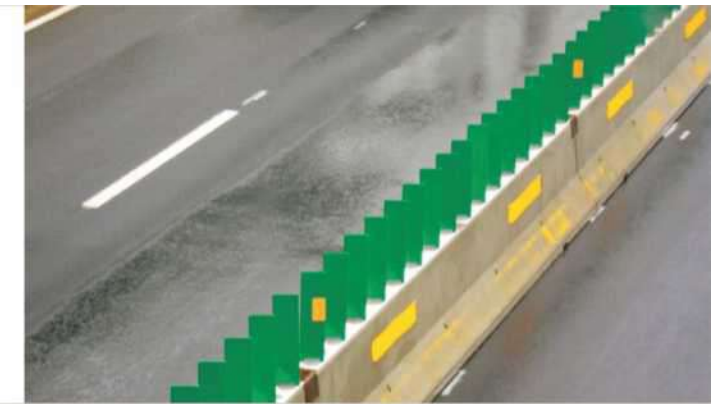
SAFETY BARRICADES

Specially in comparison to concrete and MASS barriers, water filled barriers often end up being a cost effective security and safety solution as they could be reused throughout an incredibly long life span across locations, scenarios and different jobs. Available in a wide range of sizes and being simple to transport and set up, water filled barriers are perfect for short term uses and several different long. But while concrete and MASS barrier systems may also be fit for particular purposes. One of the main benefits of water filled barriers for temporary situations is that they're less likely to cause damage in the event of impact from site workers, motorists, cyclists or pedestrians, so can end up being a safer choice than concrete.



ALCOLITE ANTI GLARE BARRICADES

Protect the traffic from headlights from oncoming traffic. It is usually used in combination with the central guardrail, central barrier (cement barrier and steel guardrail). It is designed to solve the glare of the headlights which can be a huge factor to blind the drivers and cause accidents. These help improve traffic safety and also could beautify the highway landscape.



Product Code : AL-5001
Dimension : 1000(L)X500(W)X800(H)mm
Water Filling Capacity : 15 Ltr.
Colors : Red & Yellow



Product Code : AL-5002
Dimension : 1100(L)X500(W)X160(H)mm
Water Filling Capacity : 5 Ltr.
Colors : White



Product Code : AL-5003
Dimension : 1000(L)X350(W)X760(H)mm
Colors : Red & Yellow



Product Code : AL-5004
Dimension : 2100(L)X600(W)X840(H)mm
Effective Length : 2000 mm (2 meter barricade)
Water Filling Capacity : 80 Ltr.
Colors : Red & Yellow



Product Code : AL-5005
Dimension : 1640(L)X400(W)X1000(H)mm
Effective Length : 1500 mm (1.5 meter barricade)
Water Filling Capacity : 50 Ltr.
Colors : Red & Yellow



Product Code : AL-5006
Dimension : 2020(L)X400(W)X1265(H)mm
Effective Length : 2000 mm (2 meter barricade)
Colors : Red & Yellow

Alcolite Anti Glare Barricades

Plastic body 'S' type Anti Glare Barrier made in Thermoplastic material molded in green color made to be fixed on the medians of the road to avoid vehicle lights coming from the opposite direction to the driver. Anti-glare Barrier, Anti-glare Screens or Anti dazzle Board whatever you want to call them by the function is same – Protect the traffic from headlights from oncoming traffic. It is usually used in combination with the central guardrail, central barrier (cement barrier and steel guardrail). It is designed to solve the glare of the headlights which can be a huge factor to blind the drivers and cause accidents. These help improve traffic safety and also could beautify the highway landscape.



Prodct Detail

Product Code	Width	Height	Thickness
AL-6000	200 mm	600 mm	5 mm
AL-6001	220 mm	600 mm	5 mm
AL-6002	220 mm	900 mm	5 mm



■ AL-6000 & AL-6001



■ AL-6002

MARKER ADHESIVE

&

ALCOLITE EPOXY ADHESIVE



QUE - MANAGER WHEEL CLAMP LOCK

&

REFLECTIVE SAFETY JACKETS.



Marker Adhesive

Ever Grip Bitumen Marker Adhesive (USA Made)

Product Code : AL-400

Marker Adhesive is a hot melt adhesive utilized for permanently bonding pavement markers to asphaltic and Portland cement concrete surface, including chip seal. These adhesives are provided in packed box of 25kg, and offer High reliability, Proven Performance, Impact resistant, Superior cohesion, Consistent quality, Reduced cooking, and faster setting in application equipment.

Weight : 25Kgs (4Bricks) Per Box

Advantages :

Bitumiun Marker Adhesive has been utilized for booking millions for pavement markers and is preferred by engineers worldwide for

- Superior Adhesive
- High Reliability
- Surface Preparation
- Faster Setting



Alcolite Epoxy Adhesive

Product Code : AL-500

For fixing of road studs, median marker, speed breakers, delineators, spring post & other toad furniture the adhesive is based on specialize epoxy system (resin & hardener and sand) to provide excellent adhesion of cat eye, speed breakers, and other road furniture to the base to the road surface concrete/bituminous. The material has been used extensively for the last six years and has served our clients to their total satisfaction.

Features :

- Thick Formulation.
- Fast Acting Hardener.
- Excellent "Wet Out" Properties

Advantages :

- Resists Runs or Sags
- More Productive.
- Increased Adhesion and Strength

Benefits :

- Better handling properties.
- Less time to wait for Drying.
- Higher quality repair.



Que - Manager

Product Code : AL-601



We are instrumental in providing Queue Manager to the esteemed customers at industry leading prices. These products are widely used to manage the crowd or queues in an organized manner. Moreover, our range is made available to the clients in varied specifications to meet the exact requirements of the clients.

Base: 320 mm **Height:** 910 mm **Weight:** 7/10 kg

Features : Easy to install ,Durable standards, Perfect design

Wheel Clamp Lock.

Product Code : AL-602



Material : Made from heavy gauge hardness steel with locking system.

Size : 490 mm X 240 mm X 70 mm.

Color : Red & Yellow. **Weight :** 2.8 kg.

Features : Anti theft heavy duty wheel clamp lock. It can be adjusted to fit 7 to 11 inches width tire. It is difficult to open without special tools. 2 key with lock is fitted with clamp.

Application : It is used for anti theft of vehicles. It can used to lock the vehicles in parking, traffic violation, parking violation.

Reflective Safety Jackets.



AL-603A

AL-603B



AL-603C

AL-603D

We provide high quality and excellent array of Reflective Safety Jackets, high visibility safety Vests, etc. These reflective jackets Make Individual easily visible at all time of day thus ensure safety.

Specifications :- Reflective Road safety jackets are fabricated using advanced scientific and technical fabric and film tapes which enhance person's visibility from maximum and longest distances. they are fluorescent in color and are UV stabilized.

Even Our R&D experts constantly work upon the products for their development and improvement in terms of better safety, protection, durability and finer performance. The company has aggressive plans to build this business with a wide footprint across all cities and towns of INDIA. As a Corporate philosophy, We believe in alliances and partnerships and nurtures them to reach the customers with the right solution. We offer a wide array of products and services for Road and Traffic Safety Industry. Our Company boasts of visionary management, seasoned professionals, disciplined operating systems and state of the art technology, which gives it an edge over other Road Safety Products companies. In less than a decade, the company has become a synonym for High-Quality Products delivery within time and costs.



The Company has aggressive plans to build this business with a wide footprint across all major cities and towns of India. We envision a highly safe road environment by committing ourselves to help the people drive, walk and get life safer. Establishing Top grade quality with the professional and honest attitudes as our own responsibility, persisting in the strategy of pursuing with the best quality seeking for development with professional products, focus on the future of the industry, try to develop the company into the top grade in the traffic safety production field. We will stick up to improving the quality and controlling the cost, to provide the best products and services, hoping to create rapid development for Safer Roads.



Baton Light



Tree Reflectors



Vehicle Conspicuity Tapes



Caution Tape



Plastic Chain



Rear Marking Plates For Truck & Trailers



Guard Rail Reflector (Heavy)



Guard Rail Reflector (Light)



Reflective Tape For All Vehicle

